



Ronford-Baker

CAMERA SUPPORT TECHNOLOGY

Ronford-Baker Engineering Co. Ltd
Unit 5, Kingley Park, Station Road, Kings Langley
Hertfordshire, WD4 8GW, UK.

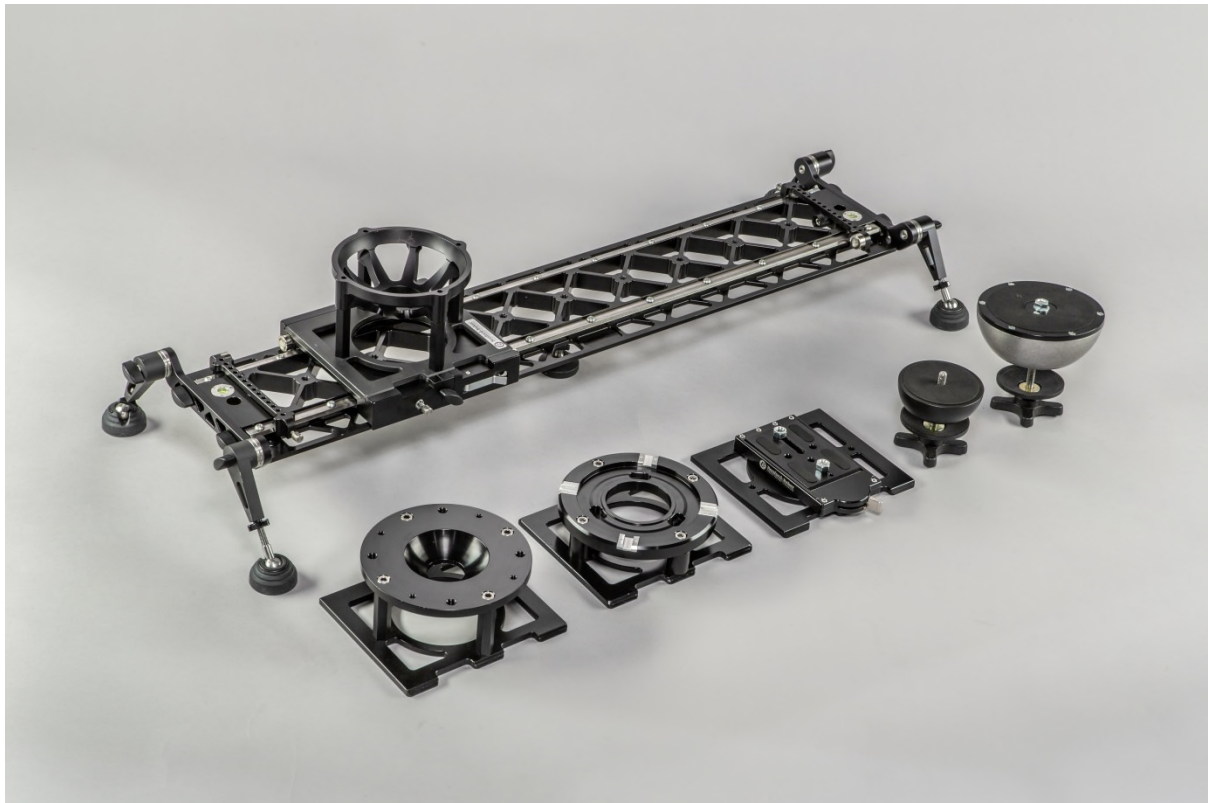
Tel: +44 (0)208 428 5941

Fax: +44 (0)208 428 4743

Email: info@ronfordbaker.co.uk

Web: www.ronfordbaker.co.uk

Ronford Baker Lightweight Precision Camera Slider



Introducing our new Lightweight portable slider.

The slider comes complete with removable and adjustable 'ARRI' standard rosette mounting legs, adjustable magnetic carriage stops and quick release carriage plate. Configurable without using any tools, you will be able to use either a 100mm or 150mm bowl mount options both on the top and underneath the slider. There is also a flat plate option for using attaching a quick release or dovetail plate.

The slider carriage runs on precision ground stainless steel rails to ensure a smooth and silent operation. 3/8" mounting points are available along the centre of the slider to help mount on a tripod using either a 100mm or 150mm levelling ball. The slider can also be mounted onto monopods or lighting stands.

Optional 32mm clamps on rosettes and tube kit is also available.

Protective impact & shock resistant wheeled case.

Technical Specifications;

- Available in 2' and 3' Lengths
- Weight of 3' model is from 5.4kg, and 2' model is from 4.3kg
- Capable of supporting up to 25kg*
- Quick release carriage plate which can also be used as a Hi-Hat
- Fast and easily mountable 100mm or 150mm base options via 3/8" holes, or on rosette mountable legs.
- The slider can also be mounted onto monopods, lighting stands or on 32mm tubes.
- Can be underslung
- Slider carriage has built in Friction and positive lock
- Adjustable magnetic carriage stops
- 'ARRI' standard rosette mounting legs, compatible with our 'Moose' Bar Hand Extensions
- Spirit Levels installed at both ends of the slider

*Slider centre supports must be used

Case Options



RF.90026 3' Slider Case



RF.90027 2' Slider Case



Slider Kit Includes;

2' or 3' Slider, complete with adjustable magnetic stops, mounting legs, centre support and one of either a 150mm or 100mm Bowl carriage plate.



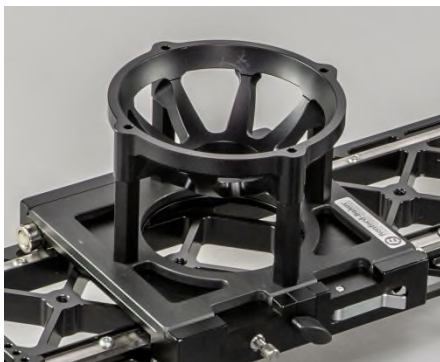
Optional Accessories

RF.LWS03 Flat 3/8" Carriage Plate

RF.80006 Large Quick Release Plate

RF.80001 Standard Quick Release Plate

RF.80080M 6" Dovetail Plate



RF.LWS01 150mm Bowl Carriage Plate



RF.LWS02 100mm Bowl Carriage Plate



RF.80011-1 100mm Levelling Ball



RF.80011 150mm Levelling Ball



RF.LWS04 16mm Spigot



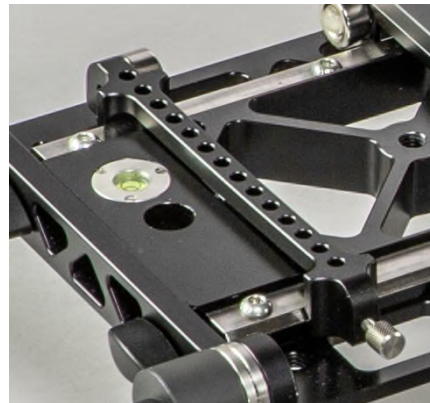
RF.LWS05 28mm Spigot



RF.LWS11 Centre Support



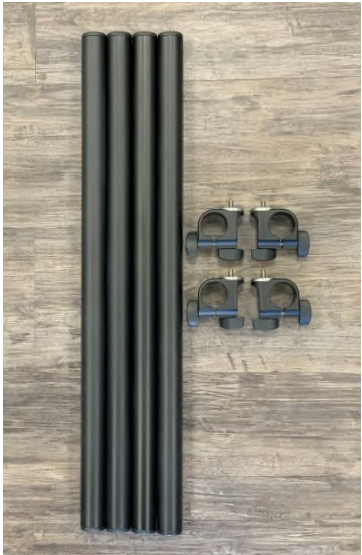
RF.LWS09 1 x Pair of Mounting Legs



RF.LWS10 Set of Adjustable Magnetic End Stops

RF.LWS06 Set of 4, 32mm (1 ¼") Clamps & Tube Leg Kit

Clamps and tubes fit inside the 3' Case.



'Arri' standard rosettes on the leg supports allow connectivity with our 'Moose' bar extensions



L.W. Slider in use

